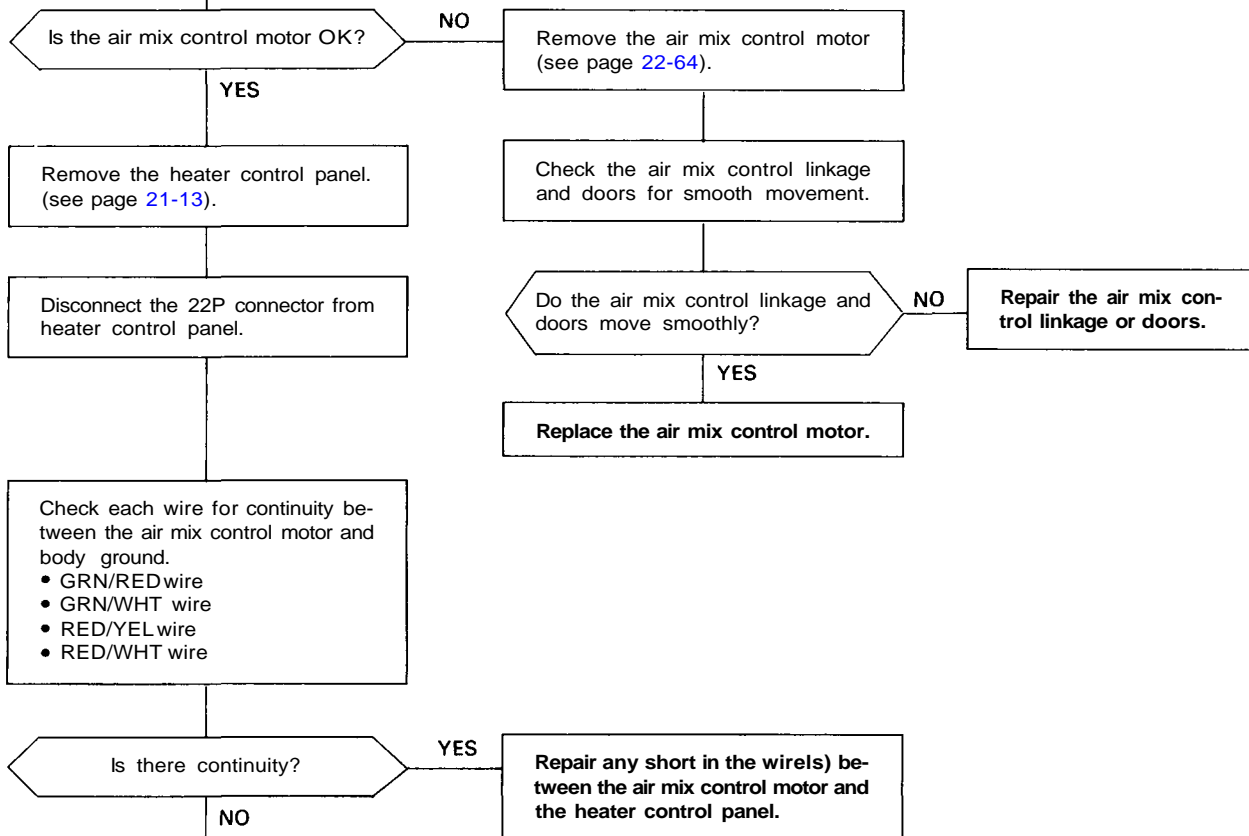
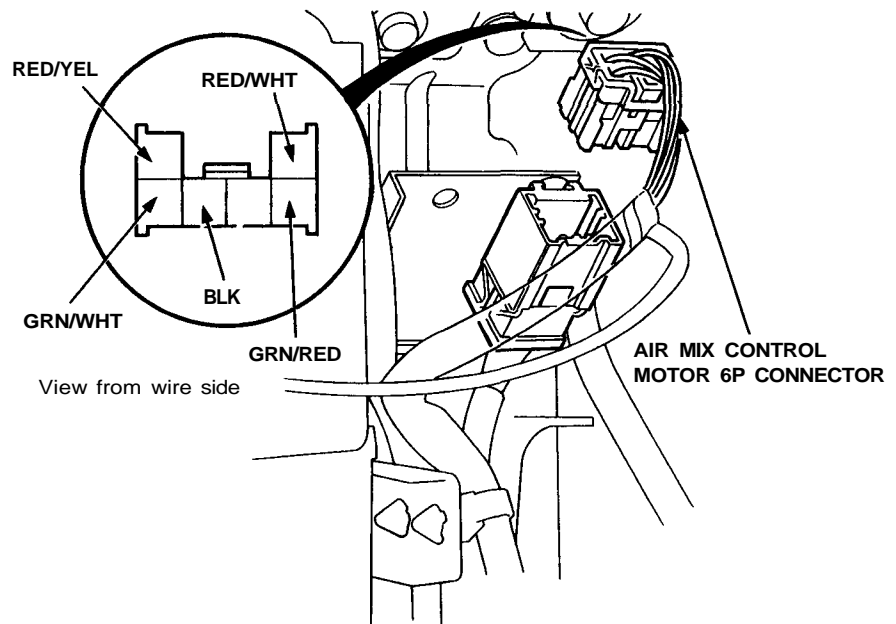
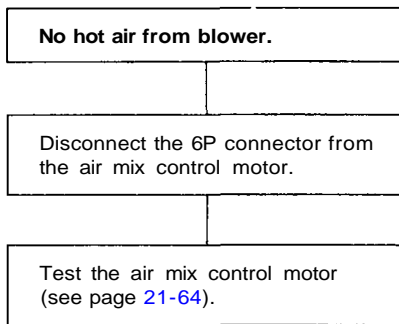
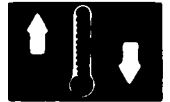


Troubleshooting

Flowchart — Air Mix Control Motor





From page 21-28

Check each wire for continuity between the air mix control motor and the heater control panel.

- GRN/RED wire
- GRN/WHT wire
- RED/YEL wire
- RED/WHT wire
- BLK wire

Is there continuity?

YES

Substitute a known-good heater control panel and recheck. If symptom/indication goes away, replace the original heater control panel.

NO

Repair any open in the wire(s) between the air mix control motor and the heater control panel.

